



Mitford Gardens, Wideopen, NE13 6LT

Offers Over £190,000

SEMI DETACHED HOME - GREAT LOCATION - FANTASTIC GARDENS

Brunton Residential are delighted to offer this three bedroom semi detached home located on Mitford Gardens in Wideopen, this home has a long driveway leading to a car port and fantastic gardens to the front and rear.

Brunton Residential are delighted to offer this three bedroom semi detached home located on Mitford Gardens in Wideopen, this home has a long driveway leading to a car port and fantastic gardens to the front and rear.

Accommodation briefly comprises; entrance porch leading to the main entrance hallway with staircase to the first floor. There is a lounge to the front of the property with a walk in bay window over looking the gardens. A dining room is positioned to the rear with two store cupboards. The kitchen offers a range of wall and floor units with coordinated work surfaces.

The first floor offers a large master bedroom with walk in bay window, a second bedroom of similar size and a third bedroom which would make for a fantastic nursery or home office. There is also a family bathroom with separate WC. Externally there is a large garden to the front which is main gravelled with paved areas, a driveway offer parking for multiple cars. The rear garden is laid mainly to lawn with a range of paved and planted areas with fenced boundaries. There is a large shed offering external storage.

ON THE GROUND FLOOR

Porch

Hallway

Lounge

10'10" x 12'6" (3.30m x 3.82m)

Dining Room

12'6" x 12'6" (3.82m x 3.82m)

Kitchen

12'6" x 6'7" (3.82m x 2.01m)

ON THE FIRST FLOOR

Landing

Bedroom

11'6" x 11'7" (3.51m x 3.52m)

Bedroom

11'10" x 11'7" (3.61m x 3.52m)

Bedroom

7'7" x 7'7" (2.31m x 2.32m)

Bathroom

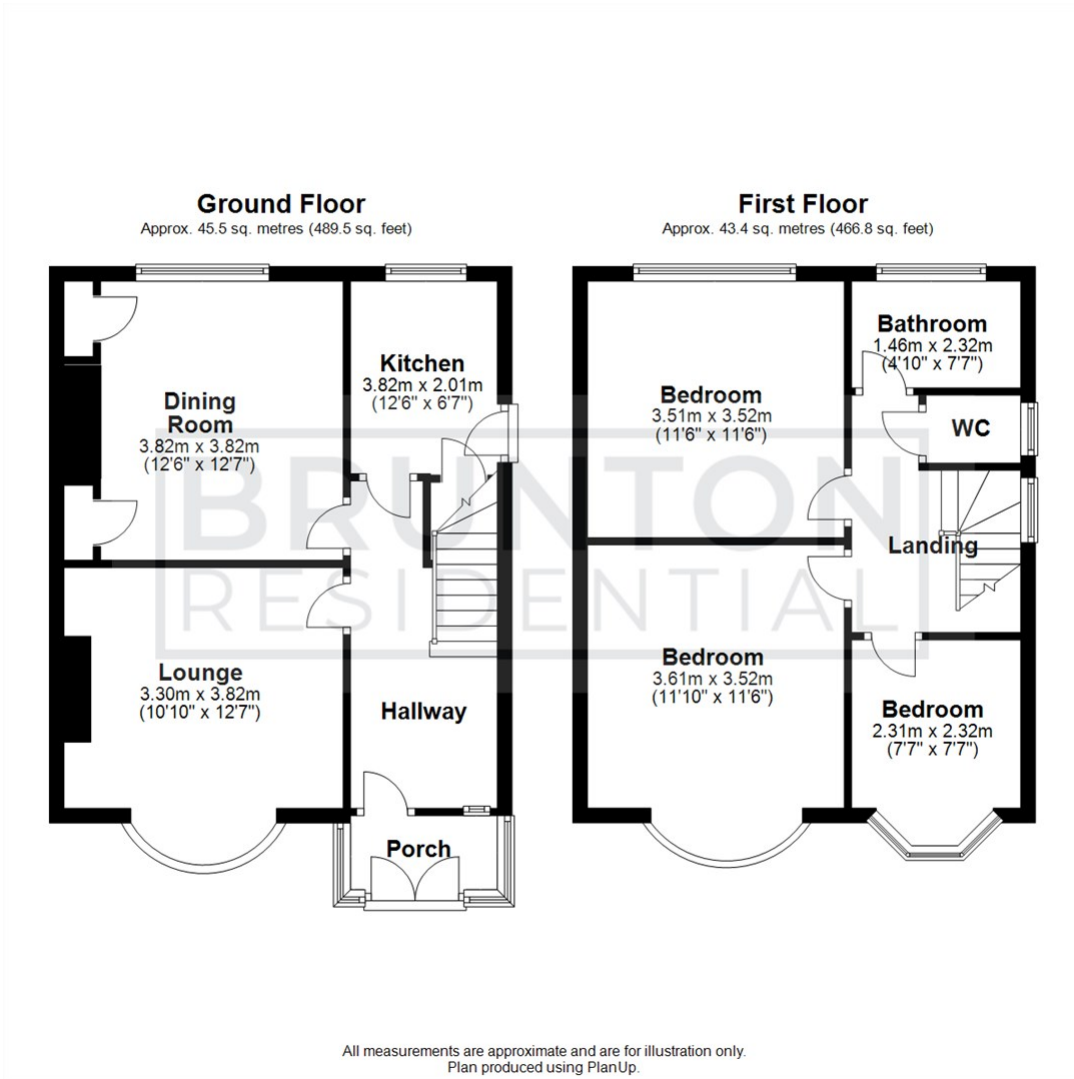
4'9" x 7'7" (1.46m x 2.32m)

WC

Disclaimer

The information provided about this property does not constitute or form part of an offer or contract, nor may it be regarded as representations. All interested parties must verify accuracy and your solicitor must verify tenure/lease information, fixtures & fittings and, where the property has been extended/converted, planning/building regulation consents. All dimensions are approximate and quoted for guidance only as are floor plans which are not to scale and their accuracy cannot be confirmed. Reference to appliances and/or services does not imply that they are necessarily in working order or fit for the purpose.

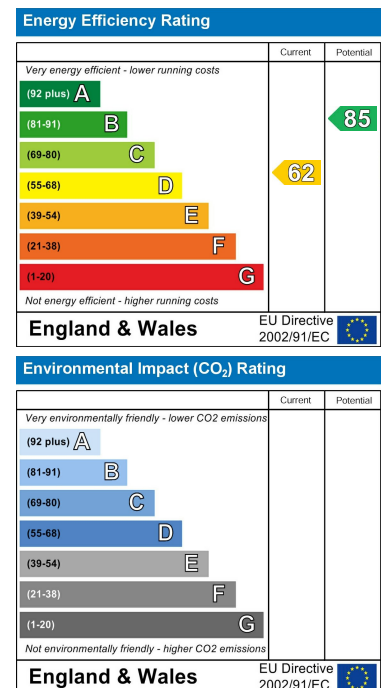
Floor Plan



Area Map



Energy Efficiency Graph



These particulars, whilst believed to be accurate are set out as a general outline only for guidance and do not constitute any part of an offer or contract. Intending purchasers should not rely on them as statements of representation of fact, but must satisfy themselves by inspection or otherwise as to their accuracy. No person in this firm's employment has the authority to make or give any representation or warranty in respect of the property.